

Stamp Set of the Month Truly Grateful



Kit Contents:

Truly Grateful Stamp Set (wood or clear mount)
All the consumables to create 5 cards/envelopes
PDF file of instructions to assemble your cards
½ of a package of Brights Candy Dots

Additional Supplies needed:

Chocolate Chip Ink Pad
Crushed Curry Ink Pad
Tangerine Tango Ink Pad
Crumb Cake Ink Pad
Blender Pen or Aqua Painter (I used the Blender Pen)
Dimensionals
Adhesive
1 ¼” Circle Punch (Optional) I provided the circles needed but if you would rather stamp then punch out your images this would be helpful.
1 3/8” Circle Punch (Optional)
Scissors

If you wish to create more you will need the following supplies:

Big Shot #113439 \$99.95
Labels Collection #125598 \$26.95
1 ¼" Circle Punch #119861 \$15.95
1 3/8" Circle Punch #119850 \$16.95
Decorative Label Punch #120907 \$16.95
Scallop Edge Border Punch #119882 \$15.95
Linen Thread #104199 \$4.50
Crushed Curry ¾" Chevron Ribbon #130019 \$8.95
Brights Candy Dots #130931 \$5.95
Naturals Ivory card stock #101849 \$7.50
Crushed Curry card stock #131199 \$6.95
Chocolate Chip card stock #102128 \$6.95
Tangerine Tango card stock #111349 \$6.95
Crumb Cake card Stock #120953 \$6.95
Sweater Weather Designer Series Paper #132184 \$10.95

Video Instructions:



Card #1 which is the **Z-Fold card** has a video which you can watch over and over. To find this video go to my blog: www.thestampcamp.com/blog/

In the right hand side bar scroll down until you see the picture of the Truly Grateful cards; click on the picture and it will bring you to the post regarding the Stamp Set of the Month and the video for Card #1.

You may want to watch this video as this is how you will color the Wheat Image for **ALL of the cards** you will make in this kit.

Card #1



1. Score the piece of Chocolate Chip card stock (4 ¼" X 11") at 2 ¾" and at 5 ½". Fold on the 5 ½" score line (like a card) then fold the 2 ¾" score line back to the fold side. (This is all done in the video, so if you need a visual check out the video)
2. Attach the Sweater Weather Designer Series Paper (2 ½" X 4") to the front folded panel and the other piece to the piece of Naturals Ivory card stock (4" X 5 ¼"). Attach the Naturals Ivory card stock to the inside of your card.
3. On the Naturals Ivory Labels Collection Framelit (I have already cut for you) stamp the Wheat Image using your Chocolate Chip ink.
4. Take your blender pen and blend the ink around the wheat image where you would like it a light brown color. (See the video for the coloring of this wheat image. You will color the wheat image and the acorn image for all the cards using this same method.)
5. Using the ink from the lid of the ink pads finish coloring your wheat image using your blender pen and the Crushed Curry ink and the Tangerine Tango ink.
6. Attach this to the Tangerine Tango Labels Collection Framelit. Attach your Framelits to the front of your card as shown **ONLY** putting adhesive on the left half side of the Framelit.
7. On the Naturals Ivory strip (1/2" X 2 ¾") stamp the Truly Grateful image using Chocolate Chip ink. On one end cut up the center and then cut from each side to the center creating a flag.
8. Attach this to the Chocolate Chip strip (3/8" X 2 7/8") cut a flag on one end using the same method as above.
9. Attach a dimensional to the straight edge and adhesive to the flag end and attach to your card front as shown.
10. On the straight edge attach a Tangerine Tango Candy Dot.
11. On the inside Naturals Ivory card stock stamp the Acorn image using the Chocolate Chip ink and blend the top of the Acorn with the Blender Pen. Color in the bottom half of the Acorn using the Blender Pen and the ink from the lid of your Tangerine Tango ink pad.
12. Make sure to stamp an Acorn image on your envelope and color as above.

Card #2



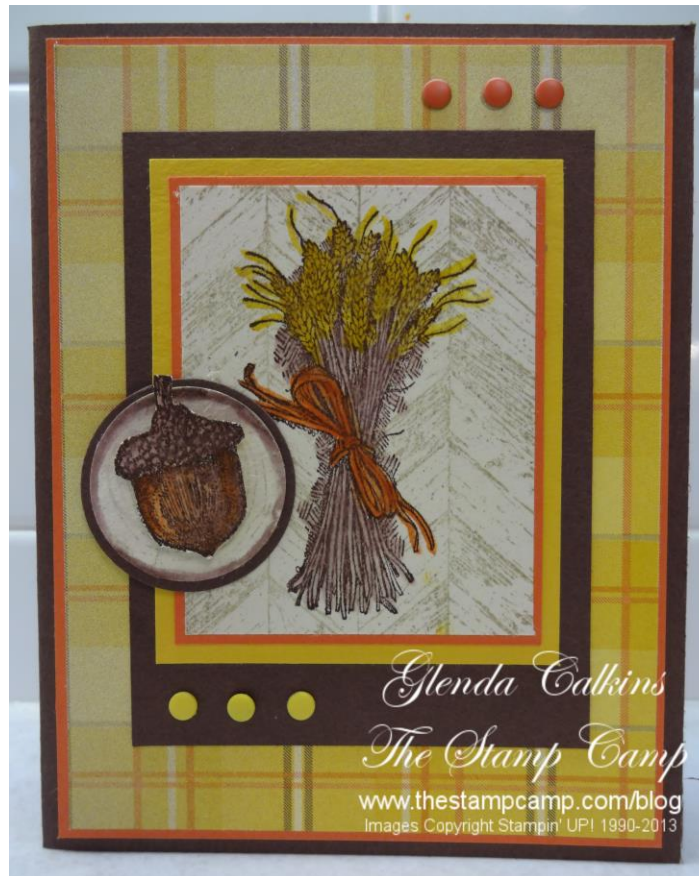
1. Fold the piece of Chocolate Chip card stock (5 1/2" x 8 1/2") in half to create your card.
2. Attach the piece of Naturals Ivory card stock (4" X 5 1/4") to the inside of your card. You can decorate this piece by stamping an image from the set on the inside and coloring as shown in the video.
3. Attach the Sweater Weather Designer Series Paper (3 7/8" X 5 1/8") to the piece of Crushed Curry card stock (4" X 5 1/4"). Attach this to the front of your card.
4. Attach the strip of Brown Argyle DSP (1 7/8" X 5 1/4") to the Crushed Curry strip (2" X 5 1/4") and attach to the center of your card front.
5. On the Naturals Ivory piece of card stock (3" X 3 1/4") stamp the Wheat image on the right hand side using your Chocolate Chip ink. Color in the Wheat image as shown in the video and as stated in Card #1 instructions.
6. Using your scissors cut the two pieces of Designer Series paper (3/4" x 2" and 3/8" x 2 1/2") into flags using the same method as you did for your flag in Card #1 instructions. Attach your flags to the left hand side of the Naturals Ivory piece as shown overlapping the flags.
7. Attach this piece to the Chocolate Chip card stock (3 1/4" X 3 1/2").
8. On the Deco Label punched piece stamp the Thankful for.... Image using your Chocolate Chip ink on the edge of the punched piece as shown. Attach this to the backside of the piece that you have stamped your wheat image on.
9. Attach this whole piece to the front of your card using dimensionals.
10. Tie a bow using the Linen Thread and attach it to the center of your Tangerine Tango bow using a mini glue dot.
11. Stamp one of the images on the outside of your envelope as well.

Card #3



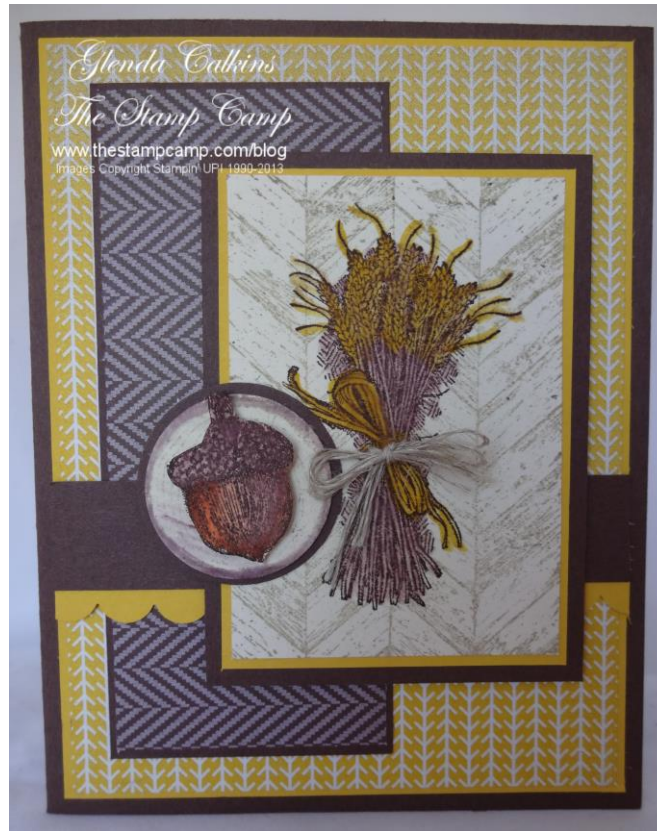
1. Fold the piece of Chocolate Chip card stock (5 1/2" x 8 1/2") in half to create your card.
2. Attach the piece of Naturals Ivory card stock (4" X 5 1/4") to the inside of your card. You can decorate this piece by stamping an image from the set on the inside and coloring as shown in the video.
3. Attach the Sweater Weather Designer Series Paper (3 7/8" X 5 1/8") to the piece of Crushed Curry card stock (4" X 5 1/4"). Attach this to the front of your card.
4. On the Naturals Ivory piece of card stock (2 1/4" x 3 1/4") stamp the Wood Grain image using your Crumb Cake ink.
5. Stamp the Wheat image on top of the Wood Grain image using your Chocolate chip ink.
6. Color in the Wheat image as shown in the video and as stated in Card #1 instructions.
7. Attach this piece to the Crumb Cake piece of card stock (2 3/8" x 3 3/8").
8. Attach this piece to the Chocolate Chip card stock (2 5/8" X 3 5/8").
9. Fold the piece of Crushed Curry Ribbon in half and either staple your ends or using a mini glue dot to stick the ends together and attach to the backside of your stamped piece using glue dots. Attach to your card front as shown using dimensionals.
10. On the strip of Naturals Ivory (1/2" X 2 3/4") stamp the Truly Grateful sentiment using your Chocolate Chip ink. Create a flag on one end as instructed in Card #1. Attach a dimensional to the flag end and add adhesive to the other end and attach to your card front as shown.
11. On the 1 1/4" Circle punched piece stamp the Wood Log image using your Crumb Cake ink. Color the outside of the wood image using ink from the lid of your Chocolate Chip ink pad.
12. Attach your stamped 1 1/4" Circle piece to the 1 3/8" Chocolate Chip Circle and attach to your card front using your adhesive.
13. On the scrap piece of Naturals Ivory card stock stamp the Acorn Image using the Chocolate chip ink and color in the top of the Acorn using your Blender Pen and color the bottom half using your Tangerine Tango ink and Blender Pen (as shown in the video).
14. Cut out your Acorn image and attach to the center of the log piece using a dimensional.
15. Stamp one of the images on the outside of your envelope as well.

Card #4



1. Fold the piece of Chocolate Chip card stock (5 ½" x 8 ½") in half to create your card.
2. Attach the piece of Naturals Ivory card stock (4" X 5 ¼") to the inside of your card. You can decorate this piece by stamping an image from the set on the inside and coloring as shown in the video.
3. Attach the Sweater Weather Designer Series Paper (3 7/8" X 5 1/8") to the piece of Tangerine Tango card stock (4" X 5 ¼"). Attach this to the front of your card.
4. On the Naturals Ivory piece of card stock (2 ¼" x 2 7/8") stamp the Wood Grain image using your Crumb Cake ink.
5. Stamp the Wheat image on top of the Wood Grain image using your Chocolate chip ink.
6. Color in the Wheat image as shown in the video and as stated in Card #1 instructions.
7. Attach this piece to the Tangerine Tango piece of card stock (2 3/8" X 3").
8. Attach this piece to the Crushed Curry card stock (2 5/8" X 3 ¼").
9. Attach this piece to the Chocolate Chip card stock (3" x 4"). Attach to the front of your card as shown.
10. Attach the Tangerine Tango and the Daffodil Delight Candy Dots to your card front as shown.
11. On the 1 ¼" Circle punched piece stamp the Wood Log image using your Crumb Cake ink. Color the outside of the wood image using ink from the lid of your Chocolate Chip ink pad.
12. Attach your stamped 1 ¼" Circle piece to the 1 3/8" Chocolate Chip Circle and attach to your card front using your adhesive.
13. On the scrap piece of Naturals Ivory card stock stamp the Acorn Image using the Chocolate chip ink and color in the top of the Acorn using your Blender Pen and color the bottom half using your Tangerine Tango ink and Blender Pen (as shown in the video).
14. Cut out your Acorn image and attach to the center of the log piece using a dimensional.
15. Stamp one of the images on the outside of your envelope as well.

Card #5



1. Fold the piece of Chocolate Chip card stock (5 1/2" x 8 1/2") in half to create your card.
2. Attach the piece of Naturals Ivory card stock (4" X 5 1/4") to the inside of your card. You can decorate this piece by stamping an image from the set on the inside and coloring as shown in the video.
3. Attach the Sweater Weather Designer Series Paper (3 7/8" X 5 1/8") to the piece of Crushed Curry card stock (4" X 5 1/4"). Attach this to the front of your card.
4. Attach the Chocolate Chip Argyle DSP (1 7/8" X 4 1/2") to the Chocolate Chip (2" X 4 5/8") card stock and attach to your card front as shown.
5. Attach the Crushed Curry Scalloped edge strip (3/4" X 4") to the backside of the Chocolate Chip Strip (3/4" X 4") and attach to your card front as shown.
6. On the Naturals Ivory piece of card stock (2 1/4" x 3 1/4") stamp the Wood Grain image using your Crumb Cake ink.
7. Stamp the Wheat image on top of the Wood Grain image using your Chocolate chip ink.
8. Color in the Wheat image as shown in the video and as stated in Card #1 instructions **except** you will not use the Tangerine Tango ink on this one just the Crushed Curry.
9. Attach this piece to the Crushed Curry piece of card stock (2 3/8" X 3 3/8").
10. Attach this piece to the Chocolate Chip card stock (2 5/8" X 3 5/8"). Attach to the front of your card as shown using dimensionals.
11. On the 1 1/4" Circle punched piece stamp the Wood Log image using your Crumb Cake ink. Color the outside of the wood image using ink from the lid of your Chocolate Chip ink pad.
12. Attach your stamped 1 1/4" Circle piece to the 1 3/8" Chocolate Chip Circle and attach to your card front using your adhesive.
13. On the scrap piece of Naturals Ivory card stock stamp the Acorn Image using the Chocolate chip ink and color in the top of the Acorn using your Blender Pen and color the bottom half using your Tangerine Tango ink and Blender Pen (as shown in the video).
14. Cut out your Acorn image and attach to the center of the log piece using a dimensional.
15. Tie a bow using the Linen Thread and attach it to the center of your Crushed Curry bow using a mini glue dot.
16. Stamp one of the images on the outside of your envelope as well.